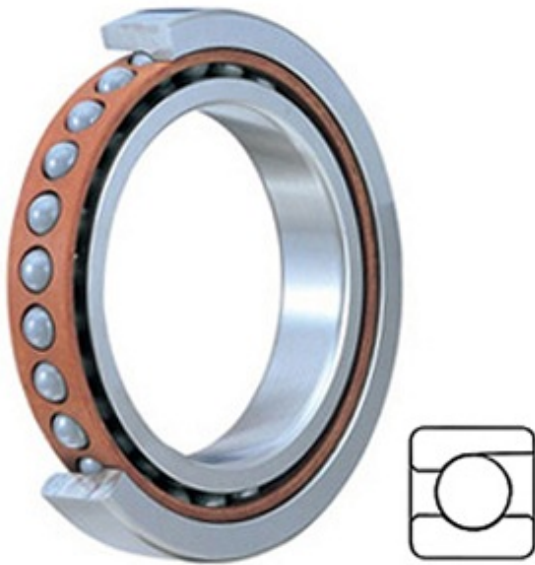




# Linqing Kaige Bearing Co., Ltd.



B/SEB2407CE1 Bearing 2D drawings and 3D CAD models

9.449 Inch | 240 Millimeter x 12.598 Inch | 320 Millimeter x 1.496 Inch | 38 Millimeter SKF B/SEB2407CE1 Precision Ball Bearings

Bearing No. B/SEB2407CE1

|                      |  |
|----------------------|--|
| Category             | Precision Ball Bearings  |
| Inventory            | 0.0  |
| Manufacturer Name    | SKF  |
| Minimum Buy Quantity | N/A  |
| Weight               | 0  |
| Product Group        | B04270   |
| Enclosure            | Open   |
| Precision Class      | ABEC 7   ISO P4  |
| Material - Ball      | Steel  |
| Number of Bearings   | 1 (Single)   |
| Contact Angle        | 15 Degree  |
| Preload              | None   |
| Raceway Style        | 1 Rib Outer Ring   |
| Cage Material        | Phenolic   |
| Rolling Element      | Ball Bearing   |
| Flush Ground         | No   |
| Inch - Metric        | Metric   |
| Other Features       | Single Row   Angular Contact   |
| Long Description     | 240MM Bore; 320MM Outside Diameter; 38MM Width; Open Enclosure; ABEC 7   ISO P4 Precision; Steel Ball Material; 1 (Single) Bearing; 15 Degree Contact Angle; Phenolic Cage Material; 1 Rib Outer |



## Linqing Kaige Bearing Co., Ltd.

|                        | Ring Ra   |
|------------------------|---|
| Category               | Precision Ball Bearings                             |
| UNSPSC                 | 31171531  |
| Harmonized Tariff Code | 8482.10.50.28                                       |
| Noun                   | Bearing   |
| Keyword String         | Ball Angular Contact                                |
| Manufacturer URL       | <a href="http://www.skf.com">http://www.skf.com</a> |
| d                      | 9.449 Inch   240 Millimeter                         |
| D                      | 12.598 Inch   320 Millimeter                        |
| B                      | 1.496 Inch   38 Millimeter                          |